

STS Cabinet

Z BOX-STS 250/500/800



Z BOX-STS 250/500/800 is a seamless on/off-grid switching cabinet designed for the 125kW rated power ZOE all-in-one ESS cabinet within 20ms switching time. It enables on/off-grid switching for single or multiple parallel-connected application. Equipped with reserved ports for critical loads connection, allowing for the normal operation of loads in grid outage condition.



Intelligent Collaboration

Seamless on/off-grid switching within 20ms



High Integration

Integrate STS, UPS, meter, breakers, ATS(optional) & other accessories in one system, compact & easy transportation



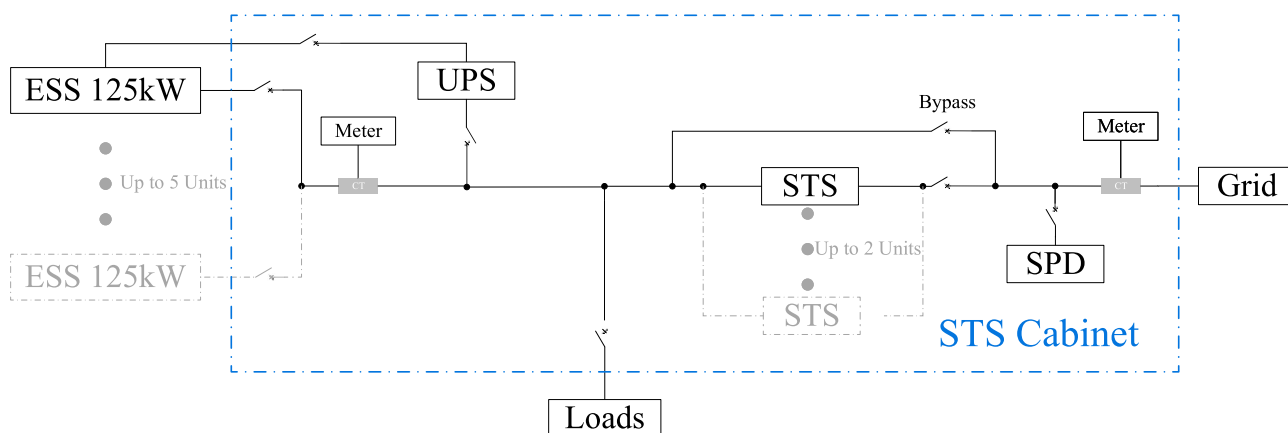
Reliable

Leading brands selection of all equipments, safe and reliable



Electrical Safety

Backup design and assurance of critical loads without Interruption



Parameters

ESS Side Parameters	Z BOX-STS 250	Z BOX-STS 500	Z BOX-STS 800
Max. No. of ESS Connection	1 unit	3 units	5 units
Max. ESS Current	1*200A	3*200A	5*200A
Rated ESS Power	1*125kW	3*125kW	5*125kW

Grid Side Parameters

No. of Grid Connection Port	1		
Max. Grid Current	200A	600A	1000A
Grid Voltage Range	400V±15%		
Grid Type	3W+N+PE		
Rated Frequency	50/60Hz		
On/off- Grid Switchin Time	20ms		

Auxiliary Equipments Parameters

UPS	Standard		
Maintenance Socket	Standard, 16A		
Surge Protection	AC Type II		
Meter Accuracy	0.5S		

General Parameters

Max. Grid Current	200A	600A	1000A
Altitude	3000m		
Ambient Temperature	-15°C~45°C		
Humidity	0~95%RH (Non-Condensing)		
Cooling Method	Air Cooling		
IP Rating	IP54		
Communication	RS485, Modbus TCP/IP		

All rights reserved. © Shanghai ZOE Energy Storage Technology Co., Ltd.

The Company reserves the right to revise the content without prior notice. The information in this document is for reference only and shall be subject to the actual contract. No entity or individual may copy, reproduce, distribute or disseminate part or all of the contents of this document without the prior written permission of the Company.